

# REACH<sup>®</sup>

Ladders & Scaffolding

A photograph of an industrial facility, likely a refinery or chemical plant, featuring a complex network of pipes, tanks, and structural steel. In the foreground, a metal access platform or ladder structure is visible, extending from the bottom left towards the center. The background is filled with various industrial components, including large cylindrical tanks and overhead piping, all under a clear blue sky. The overall scene is brightly lit, suggesting a sunny day.

## INDUSTRIAL ACCESS SOLUTIONS

EDITION C

---

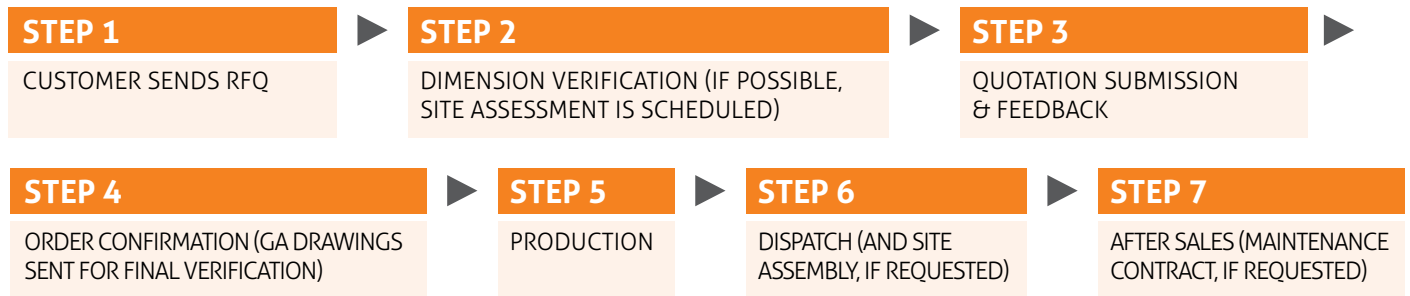
*Reach for the skies*

# ABOUT REACH



Reach®, our brand of customised aluminium fabrication for access solutions is the perfect choice for a multitude of reasons and applications. Launched in 2010, to cater to a growing need for customisation and industrial grade applications, we now offer a wide range of solutions exemplifying durability, versatility, and innovation.

## Our Process:



## Applications:



OIL AND GAS PLANTS



WAREHOUSING



POWER PLANTS



FOOD PROCESSING PLANTS



MAINTENANCE, REPAIR, OVERHAUL (MRO) WORKSHOPS



AIRPORTS



HEAVY INDUSTRIES (STEEL/ALUMINIUM)



WATER INFRASTRUCTURE PLANTS

## Range of clients served:



Saipem



DAELIM



Along with a host of other clients across the GCC.  
We welcome new ideas and can work on customisation requests.

Reach for the skies

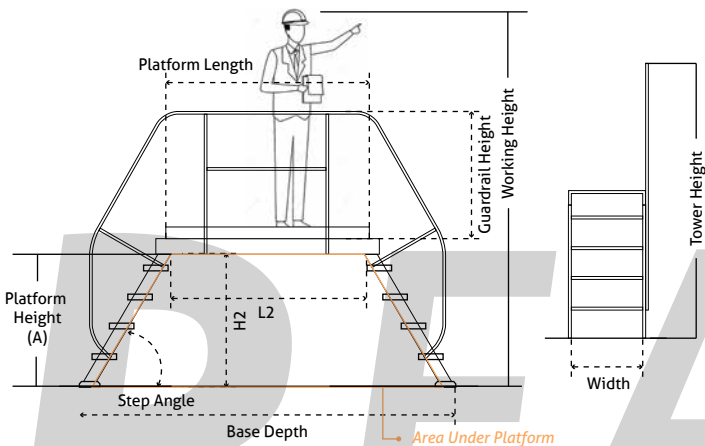
# BRIDGING STEPS LADDER

200 KG  
SWL\*

ALSO KNOWN AS CROSS-OVER LADDER

## Product Features:

- Ideal solution for accessing areas wherein path may be obstructed i.e. piping, conveyor belt system, machines drainage pathway.
- Large platform also allows work/ maintenance/ supervision to be carried out comfortably.
- Nut/bolt system makes assembly/ disassembly easy and reduces transport and storage costs.
- Additional features possible (i.e. toe plate, door, jack, etc).



**Important Note:**  
Request for dimension verification sheet in order to clarify space restrictions, especially for the area under the platform.

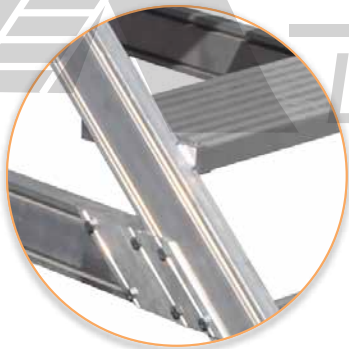
**Product Dimensions:**  
Request product dimension verification sheet. ®

**Key Feature:**  
All major components are replaceable (unlike fully welded steel/aluminium alternatives).

Horizontal bracing & Nut/bolt system

Step & Wheel

Railing & Platform



## Table of Measurements:

BRIDGING STEPS LADDER - 45°			
ITEM CODE	PLATFORM HEIGHT (A)	NUMBER OF STEPS	BASE DEPTH
BSL4503	600 MM	2+1+2 (3)	1800 MM
BSL4504	800 MM	3+1+3 (4)	2200 MM
BSL4505	1000 MM	4+1+4 (5)	2600 MM
BSL4506	1200 MM	5+1+5 (6)	3000 MM
BSL4507	1400 MM	6+1+6 (7)	3400 MM
BSL4508	1600 MM	7+1+7 (8)	3800 MM
BSL4509	1800 MM	8+1+8 (9)	4200 MM
BSL4510	2000 MM	9+1+9 (10)	4600 MM

Tables based on standard dimensions

BRIDGING STEPS LADDER - 60°			
ITEM CODE	PLATFORM HEIGHT (A)	NUMBER OF STEPS	BASE DEPTH
BSL6003	750 MM	2+1+2 (3)	1470 MM
BSL6004	1000 MM	3+1+3 (4)	1760 MM
BSL6005	1250 MM	4+1+4 (5)	2050 MM
BSL6006	1500 MM	5+1+5 (6)	2330 MM
BSL6007	1750 MM	6+1+6 (7)	2620 MM
BSL6008	2000 MM	7+1+7 (8)	2910 MM
BSL6009	2250 MM	8+1+8 (9)	3200 MM
BSL6010	2500 MM	9+1+9 (10)	3490 MM
BSL6011	2750 MM	10+1 (11)	3780 MM

Product Code: BSL

## Standard Dimensions:

Width\*\*: 800mm (standard)  
Platform dimensions: width based on step width  
Platform Length\*\*: 600mm standard  
Step depth: 240mm (for 45°), 180mm (for 60°)  
Handrail height – based on step angle  
Guardrail height\*: 1000mm

## Step angle and interval:

For 45° – step interval is 200mm  
For 60° – step interval is 250mm

\* SWL may vary based on final platform dimensions.  
\*\* Sizes can be changed as per request.

Reach for the skies

# MOBILE WORK PLATFORM

200 KG  
SWL\*

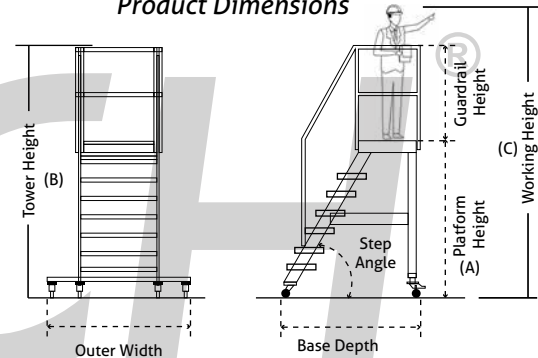
IDEAL FOR INDUSTRIAL PLANT MAINTENANCE/ MODULAR WORK

## Product Features:

- Heavy Duty Aluminium profile construction, gives durability, agility and great load bearing capacity.
- Reinforced aluminium platform, provides comfortable access during long working hours.
- Standard 60° angle, wide step (depth and width) allow effortless ascent/descent.
- Three sided guardrail, with safety chain locking for maximum protection.
- Fully welded solution; the handrails and guardrails can be dismantled.
- Handrail for assisted climb.
- Additional features possible (i.e. toe plate, door, etc).



Product Dimensions



Working Platform

Step and Wheel

Side View



## Table of Measurements:

MOBILE WORK PLATFORM					
ITEM CODE	STEPS + PLATFORM	PLATFORM HEIGHT (A)	TOWER HEIGHT (B)	WORKING HEIGHT (C)	BASE DEPTH
MWP 2	1+1	500 MM	1475 MM	2500 MM	800 MM
MWP 3	2+1	750 MM	1725 MM	2750 MM	960 MM
MWP 4	3+1	1000 MM	1975 MM	3000 MM	1100 MM
MWP 5	4+1	1250 MM	2225 MM	3250 MM	1250 MM
MWP 6	5+1	1500 MM	2475 MM	3500 MM	1390 MM
MWP 7	6+1	1750 MM	2725 MM	3750 MM	1668 MM

Above table based on standard dimensions.

## Product Code: MWP

### Standard Dimensions:

Step interval: 250mm  
 Step width\*\*: 600mm (800mm option available)  
 Step depth: 180mm  
 Step angle: 60°  
 Platform dimensions\*\*\*: 600mm (width) x 600mm (depth)  
 Toeboard option available

Ladder outer width: approx 700mm  
 Guardrail height: approx 975mm  
 Handrail height: based of step angle

\* SWL may vary based on final platform dimensions.  
 \*\* Indicates options that may or may not be altered.

# FOLDABLE STAIRCASE PLATFORM LADDER

200 KG  
SWL\*

## Product Features:

- Wide aluminium steps with anti-slip features.
- Railings can be dismantled for easy transport or storage.
- Large platform area with toeplate that provides comfortable access for long work duration.
- Tool tray on top of guardrail.
- HD shoes with rubber grip.
- Fully welded solution, foldable solution.
- Standard 60° angle allows effortless ascent or descent.
- Additional features possible (i.e. door, wheels, base plate).

Large Platform & Toeplate

Wide Step & HD shoes

Guardrail & Tool Tray

Railings can be dismantled



## Table of Measurements:

FOLDABLE STAIRCASE PLATFORM LADDER								
ITEM CODE	STEPS+ PLATFORM	PLATFORM HEIGHT		FREESTANDING HEIGHT		**WORKING HEIGHT		APPROXIMATE WEIGHT
		METRES	FEET	METRES	FEET	METRES	FEET	KILOGRAMS
FSPL 2	1+1	0.50	1' 8"	1.48	4' 10"	2.50	8' 2"	16.00
FSPL 3	2+1	0.75	2' 6"	1.73	5' 8"	2.75	9' 0"	18.50
FSPL 4	3+1	1.00	3' 3"	1.98	6' 6"	3.00	9' 10"	21.00
FSPL 5	4+1	1.25	4' 1"	2.23	7' 4"	3.25	10' 8"	26.00
FSPL 6	5+1	1.50	4' 11"	2.48	8' 2"	3.50	11' 6"	28.00

Above table and dimensions are based on standard dimensions only.

\* SWL may vary based on final platform dimensions

\*\* Average size of man's reach from foot to outstretched hand is 2.0 m

**Product Code: FSPL**

## Standard Dimensions:

Step Angle: 60°

Step Interval: 250mm

Step Width: Less than 600mm

Step Depth: 180mm

Platform Dimensions: 550mm (Width) x 600mm (Depth)

Ladder Outer Wide: Approx. 700mm

Guardrail Height: 975mm from platform

Handrail Height: 275mm from step

Reach for the skies

# STAIRCASE PLATFORM LADDER

200KG  
SWL\*

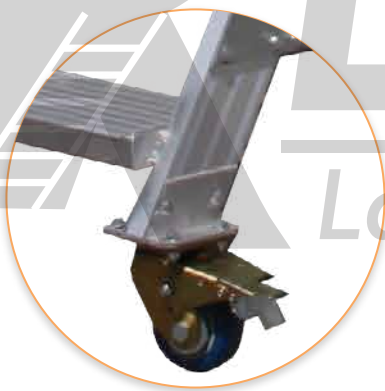
IDEAL FOR WAREHOUSING/INDUSTRIAL PLANT MAINTENANCE

## Product Features:

- Heavy Duty Aluminium Alloy gives great strength, lightness and durability to carry out various works at height.
- Thick aluminium chequered sheet platform area, large enough for working long durations at a time. Toeplate is added for safety purposes.
- 60° angle step (standard) or 45° angle step available on request (note dimensions will differ).
- Ladder has two-sided handrail, in addition to a three-sided platform railing with safety chain (Optional gate available).
- Nut/bolt system makes assembly/ disassembly easy and reduces transport and storage costs.
- Wide step (depth and width) allow effortless ascent/descent.
- Additional features possible (i.e. toe plate, door, jack, etc).



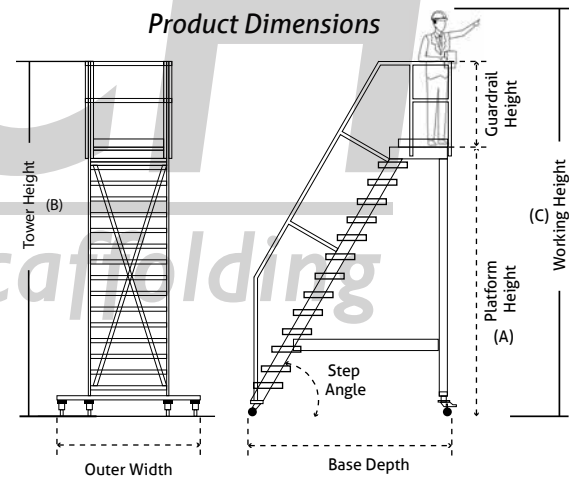
Step & Wheel



Guardrail & Toeplate



Product Dimensions



## Table of Measurements:

STAIRCASE PLATFORM LADDER						
ITEM CODE	STEPS & PLATFORM	PLATFORM HEIGHT (A)	TOWER HEIGHT (B)	WORKING HEIGHT (C)	BASE DEPTH	OUTER WIDTH
STCPF4	3+1	1000 MM	1975 MM	3000 MM	1120 MM	690 MM
STCPF6	5+1	1500 MM	2475 MM	3500 MM	1400 MM	690 MM
STCPF8	7+1	2000 MM	2975 MM	4000 MM	1700 MM	1000 MM
STCPF10	9+1	2500 MM	3500 MM	4500 MM	2180 MM	1200 MM
STCPF12	11+1	3000 MM	4000 MM	5000 MM	2500 MM	1200 MM
STCPF14	13+1	3500 MM	4500 MM	5500 MM	2800 MM	1400 MM
STCPF16	15+1	4000 MM	5000 MM	6000 MM	3080 MM	1600 MM
STCPF18	17+1	4500 MM	5500 MM	6500 MM	3360 MM	1800 MM
STCPF20	19+1	5000 MM	6000 MM	7000 MM	3650 MM	2000 MM

Above table based on standard dimensions.

## Product Code: STCPF

### Standard Dimensions:

Step angle\*\*: 60° (45° option available)

Step interval: 250mm (200mm for 45°)

Step width\*\*: 800mm (600mm & 1000mm options available)

Step depth: 180mm (240mm for 45°)

Platform dimensions\*\*\*:

a) 600mm (width) x 600mm (depth) for STCPF8 & under

b) 800mm (width) x 800mm (depth) for STCPF10 & above

Guardrail height\*\*: 1000mm; based on platform height

Handrail height: based of step angle

\* SWL may vary based on final platform dimensions

\*\* Indicates options that may or may not be altered

### Key Feature:

All major components are replaceable (unlike fully welded steel/aluminium alternatives).

# HEAVY DUTY STOOLS

VARIED  
LOAD  
RATING

IDEAL FOR INDUSTRIAL PLANT MAINTENANCE, WAREHOUSING  
AND SHOP FLOOR WORK

## Product Features:

- Base plate standard with hole provision for ground attachment at site (or Rubber shoes is optional).
- Heavy duty Aluminium Alloy gives great strength, lightness and durability to carry out various works at height.
- Fully welded solutions.
- Single sided step access at a 60° angle step (standard) or 45° angle step available on request (note: dimensions will differ).
- Wide step (depth and width) allow effortless ascent/descent.
- Large anti-slip platforms.
- Optional extras: Railings (guardrail and handrail) recommended over 1m platform height and/or 2 no's Back wheels (fixed type).



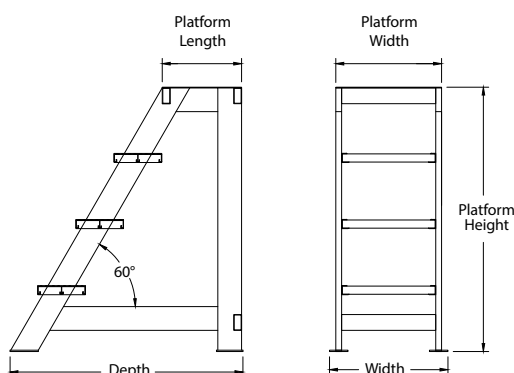
Standard Stool

Stool with Guardrail

Cantilever Stool

MRO Stool (45°)  
Nut & Bolt Assembly

## Product Dimensions:



## Product Code: HDS

### Standard Dimensions:

Step interval: 250mm (200mm for 45°)  
Step depth: 180mm (240mm for 45°)  
Step angle: 60° (45° option available)  
Platform dimensions: 500mm (width) x 300mm (depth)

Guardrail option available.

\* SWL may vary based on final platform dimensions.

# CANTILEVER ACCESS PLATFORM

VARIED  
LOAD  
CAPACITY

IDEAL FOR INDUSTRIAL PLANT MAINTENANCE & MEZZANINE /  
ROOF ACCESS

The Cantilever Access platform is a customised solution giving access to unreachable areas through the extended platform at the top level. It is ideal for accessing tanks; heavy vehicles, trains, aviation, storage containers, mezzanines, heavy machinery or places where standard ladders can not reach due to spatial constraints.

## Product Features:

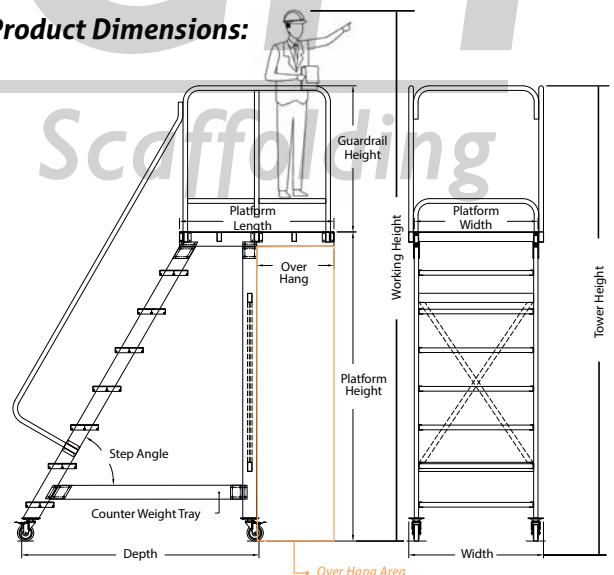
- Heavy duty Aluminium Alloy gives great strength.
- Lightness and durability to carry out various works at height.
- Nut and Bolt system allows for easy assembly/disassembly method.
- The whole structure can be disassembled and packed in component pieces, saving storage space and transport cost.
- Egress options available.
- Extended platform area.
- Cantilever / overhang safe for single person only. (Max. load varies)
- Counterweight balance provision at base. (No ballast will be provided)



Platform & Overhang

Counter weight tray

Product Dimensions:



## Product Code: CAP

## Standard Dimensions:

Step interval: 250mm  
Step width: 800mm (1000mm options available)  
Step depth: 180mm (240mm for 45°)  
Step angle: 60° (45° option available)  
Toeboard option available

Overhang based on height and site requirement.  
Guardrail height: 1000mm  
Handrail height: based of step angle

Other dimensions only can be calculated as per client requirement / design approval.

### Important Note:

Please verify dimensions of workspace as Over Hang area will determine rest of ladders dimensions and appropriate counterweight provision needs to be provided to avoid ladder from tipping over.

### Key Feature:

All major components are replaceable (unlike fully welded steel/aluminium alternatives).



# CAT LADDER

150 KG LOAD CAPACITY

ALSO KNOWN AS CAGE LADDER OR VERTICAL LADDER

## Product Features:

- Ideal for use in sewage networks, garbage tips, storage reservoirs, pump shafts, tanks, roof access etc.
- Non-slip ribbed rungs.
- Rectangular channel construction.
- Bracket/wall stay option available in steel or aluminium.
- Aluminium cage of 800mm diameter for ladders above 3.0m vertical height.

Wall Bracket / Stays



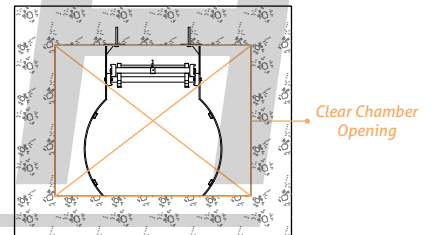
Cage



## Optional Extras:

- Retractable handrail for access into tanks/chambers, or to exit onto platforms.
- Floor connection/base plate.
- Security door access barrier (padlock extra).
- Landing rails to exit onto roof landing.
- Anchor bolts/screws not part of delivery scope, unless specified.

## Product Dimensions:



REACH Ladders & Scaffolding

Retractable Handrail

Security Door Access Barrier

Exit Rail onto Platform



## Product Code: CAT

## Standard Dimensions:

Step interval: 300mm standard

Step width: 500mm standard

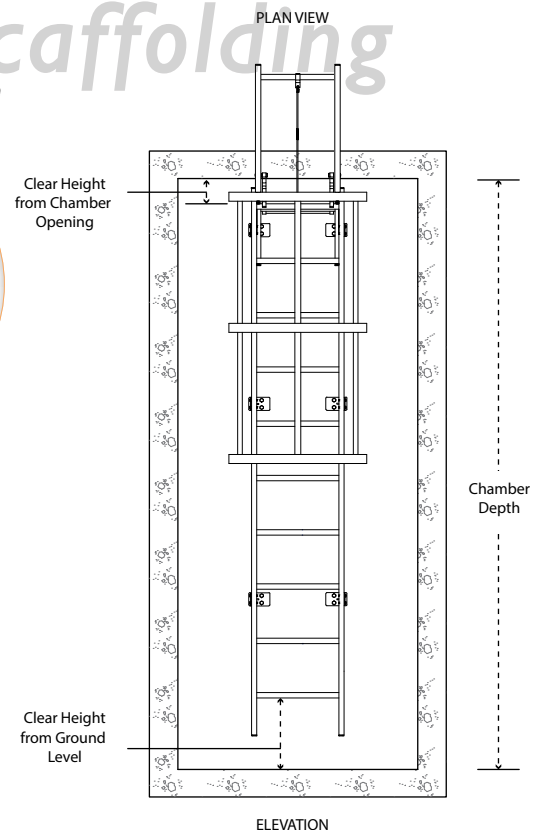
Step depth: 30mm

Cage Diameter: Min. 700mm, Max. 800mm

Distance to wall: Min. 150mm (Bracket Length)

Clear Height from Chamber Opening: Max. 100mm

Clear Height from Ground Level: Max. 200mm



Clear Height from Chamber Opening

Clear Height from Ground Level

Chamber Depth

Reach for the skies

# BULWARK LADDER

VARIED LOAD CAPACITY

ALSO KNOWN AS ALUMINIUM STAIRCASE

**Product Features:**

- Also use in steel access scaffolding.
- Can be used for trailer/container access.
- To traverse higher platform/podium levels.
- Various locking provisions based on area of use.
- Max 5 metre length (above 3m additional bracing provisions may be required).
- 45° slant/slope ideal for ascent and descent (60° also available).
- Sturdy 38mm o/d handrail for safer assisted climb (single or double handrail is possible).



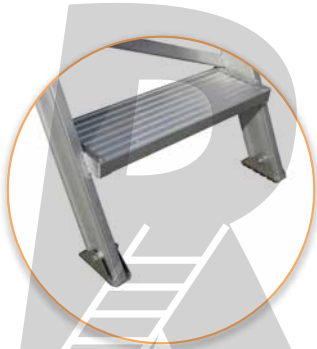
Top Section Landing Connection

Step / Shoe option

Handrail option

a) Hook Flat

b) Base Plate



Product Code: **BLWRK**

**Standard Dimensions:**

- Step angle: 45° (standard) / 60° (optional)
- Step interval: 200mm (45°) / 250mm (60°)
- Step depth: 240mm (45°) / 180mm (60°)
- Step width: min 500mm - max 1000mm
- Handrail height: based on ladder angle
- Vertical height: from 1m to 5m

For steel access scaffolding:

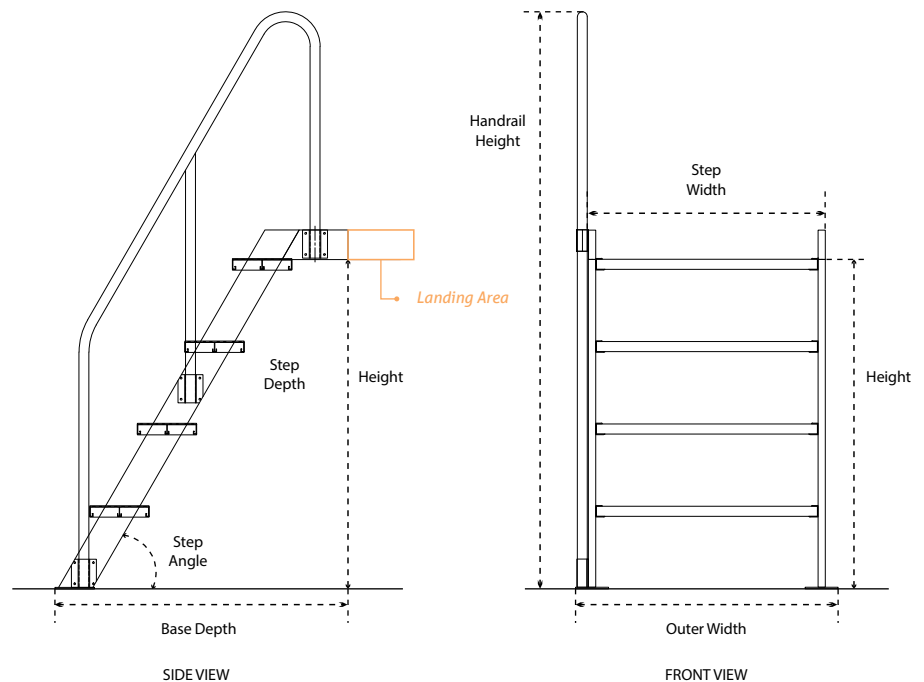
- 1) Ledger dimensions
- 2) Pipe/tube dimensions
- 3) Handrail options
- 4) Load capacity

**Important Note:**

Please verify dimensions of workspace as Landing Area will determine rest of ladders dimensions and appropriate counterweight provision needs to be provided to avoid ladder from tipping over.

Ladders & Scaffolding

**Product Dimensions:**



# REACH<sup>®</sup>

This page is intentionally left blank.

---

## *Ladders & Scaffolding*

# VEHICULAR ACCESS SOLUTIONS

Our tailor-made solutions cater to various modes of transport, especially for trains. We develop customised access solutions for a wide range of clients and industries.

## Range of clients served:



## Applications:

Our solutions vary as per industry and model/mode of transport requirements, but our experience spans across the following applications.

Emergency evacuation purposes

Roof access

General maintenance

Preventative maintenance

Air conditioner-chiller maintenance

Coupler maintenance

Deep cleaning & washing purposes

Inspection

Repair work

Storage purposes

Temporary work stands

Paint Jobs

REACH<sup>®</sup>  
Ladders & Scaffolding

## AVIATION

### FUELING

Various heights and nozzle holder options for small aircraft fueling jobs.



### JETOPS

Customised solutions for light aircraft maintenance jobs



# TRAINS/TRAMS

## STOOLS (WITH CLAMPS)

Application for Chiller Maintenance



## RAIL PIT

For Body Maintenance along tracks



## RAILING

Guardrailings for inspection platform safety



## MNTFP

Maintenance Platforms to access various positions of the tram/train body.  
Options include: removable guard railing, rubber bumpers for protection, etc.



## GENERAL TRANSPORT

### TRAILER ACCESS

Customised bulwark ladders



### BUS/CAR ACCESS

Preventative body maintenance works



### WASHING PLATFORM

Double or single vehicle access. Rubberized platforms with drainage provision.





[www.aljarsh.net](http://www.aljarsh.net)  
[info@aljarsh.net](mailto:info@aljarsh.net)

**Al Jarsh Metal Sections Manufacturing Co. LLC.**

Tel: +971-4-340 0510  
Fax: +971-4-340 9612  
P.O.Box: 8533  
Al Quoz, Dubai, UAE

© 2021 Copyright Al Jarsh Metal Sections Manufacturing Co. L.L.C. All Rights Reserved.  
Any unauthorized use, distribution, dissemination or duplication of this material is strictly prohibited.